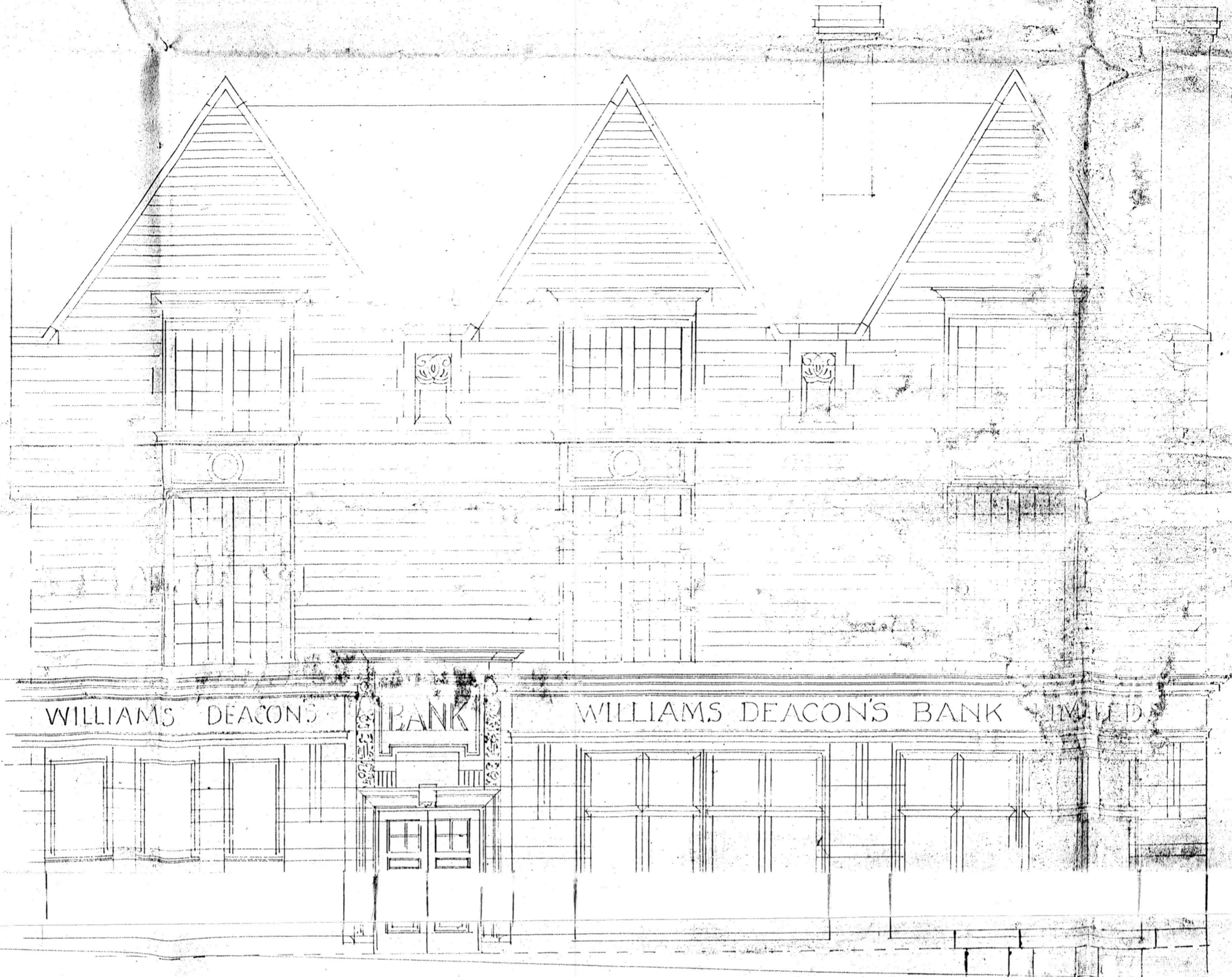


WILLIAMS DEACONS BANK LTD
RAMSBOTTOM BRANCH

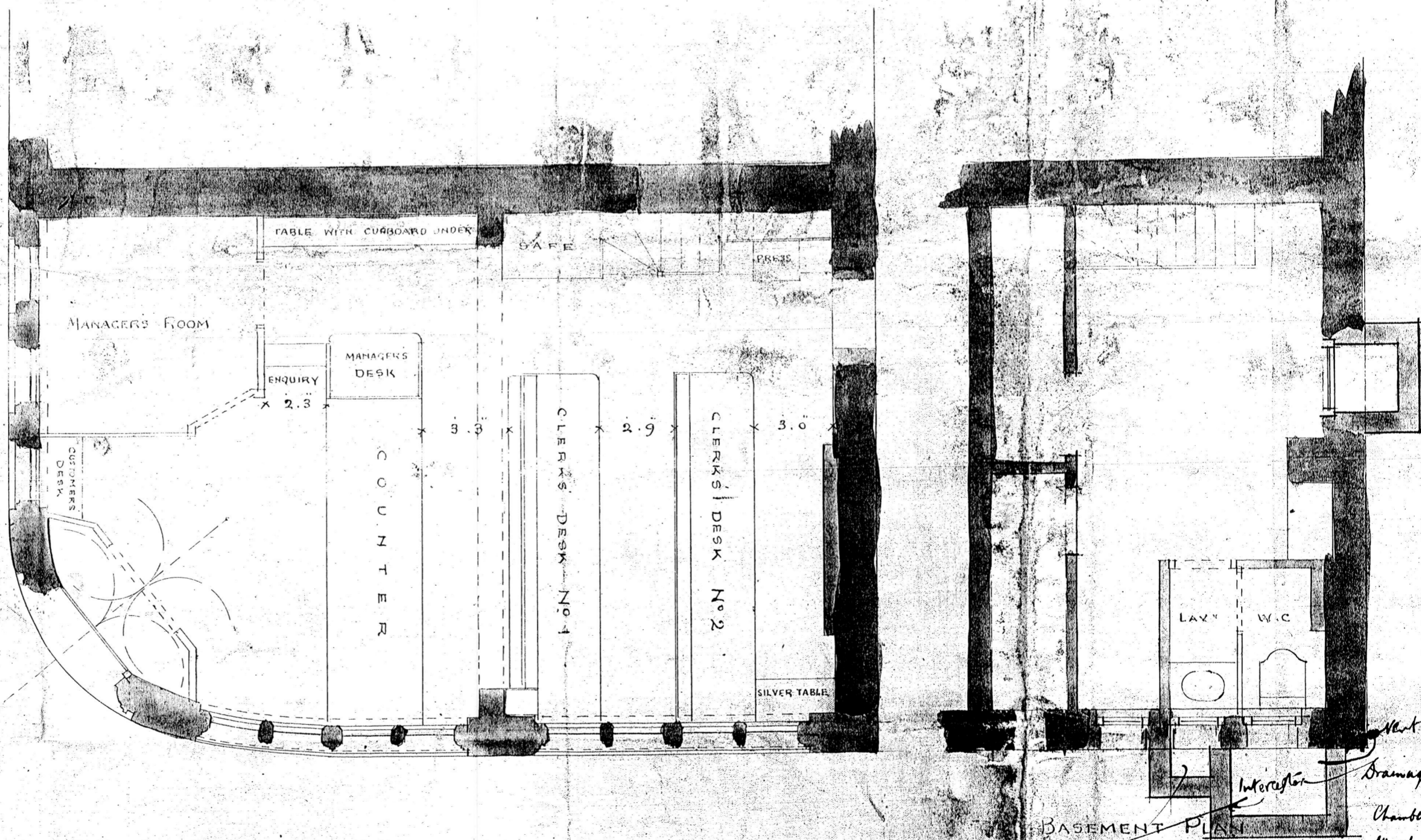
1913 (now Royal Bank
of Scotland)

Opened June 2nd 1914

794+



ELEVATION TO BRIDGE STREET AND CROW LANE (Dev't)



GROUND PLAN.

Basement Plan
6" to main floor
Chamber for Channel
Sully for last work.
Vent
Drainage
Chamber
with Vent
& airty

J. LANGHAM & A.R. PARKER
ARCHITECTS
MANCHESTER

Approved by the Ramsbottom Urban D

Scale of 1" = 5' 10' 20' 30' Feet

RHS/20/2/11/9

December 11th 1913